



Welcome to the West Area Planning Committee

- **This planning committee meeting is held in public, but it is not a public meeting.**
- **There will be opportunity for the public to address the committee on each application.**
- **If you wish to speak for or against a planning application, you will need to have either requested it in advance, or fill out and hand in one of the available speaker forms.**
- **Information on meeting protocol and conduct at committee is set out in the Code of Practice.**
- **You can find a copy of the Code of Practice in the committee agenda, just before the first planning application report.**











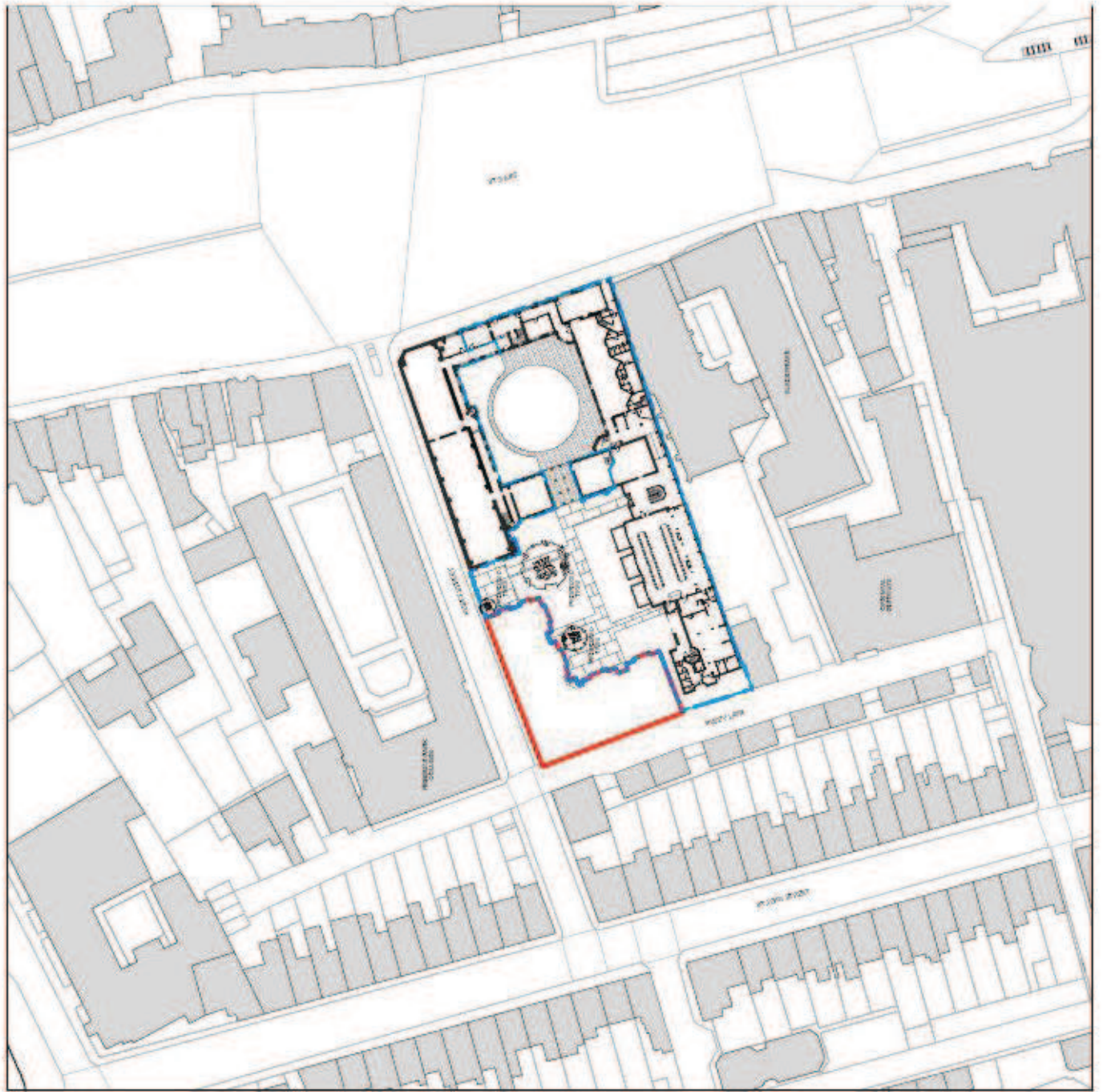


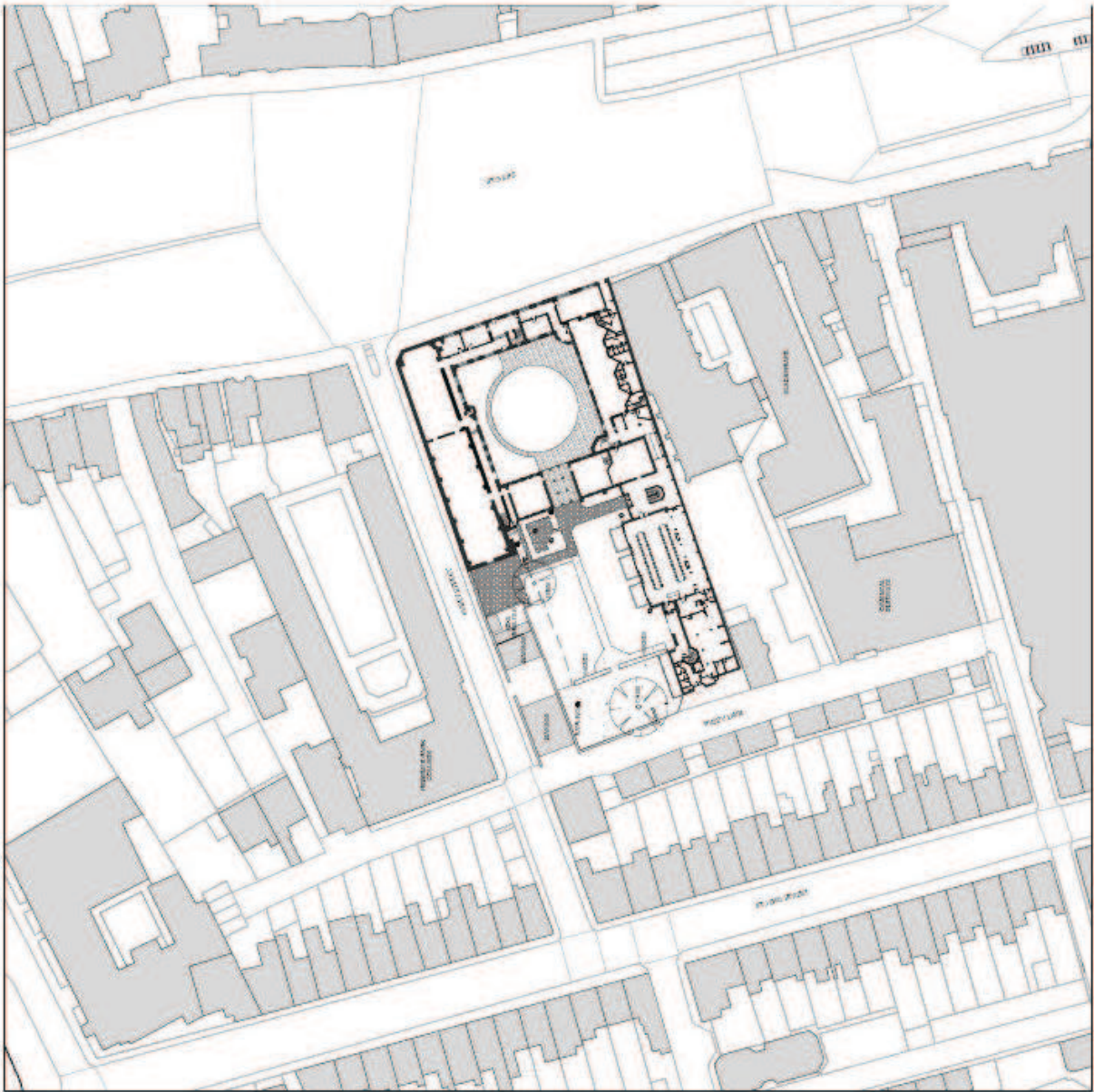






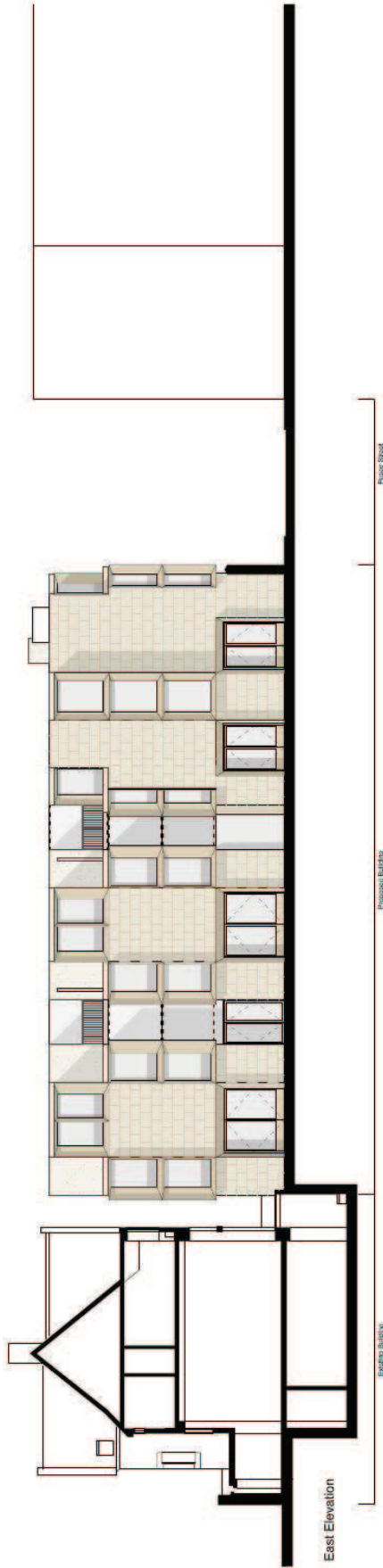
Walls at Pusey Lane including Tudor-style archway








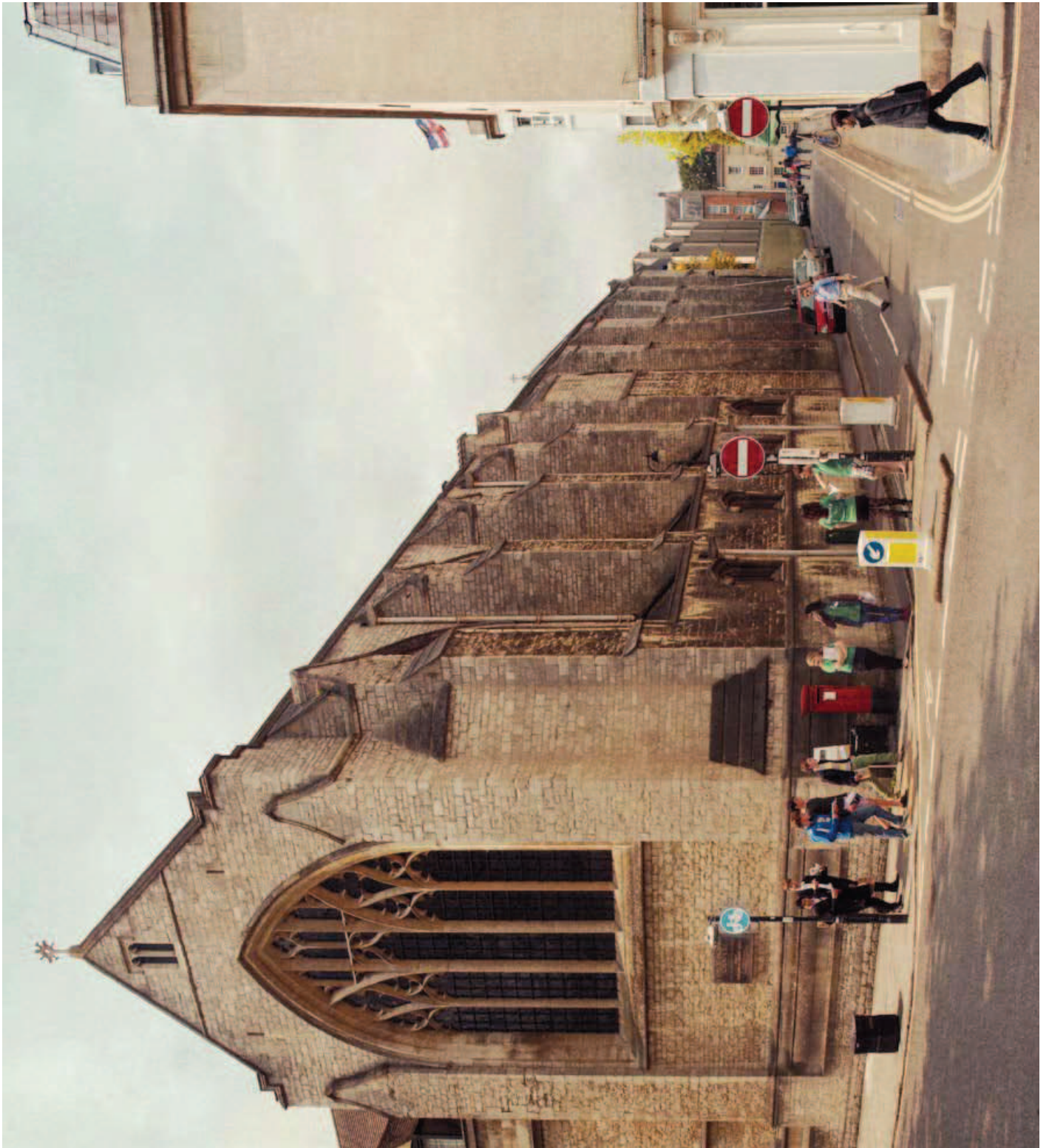


South Elevation



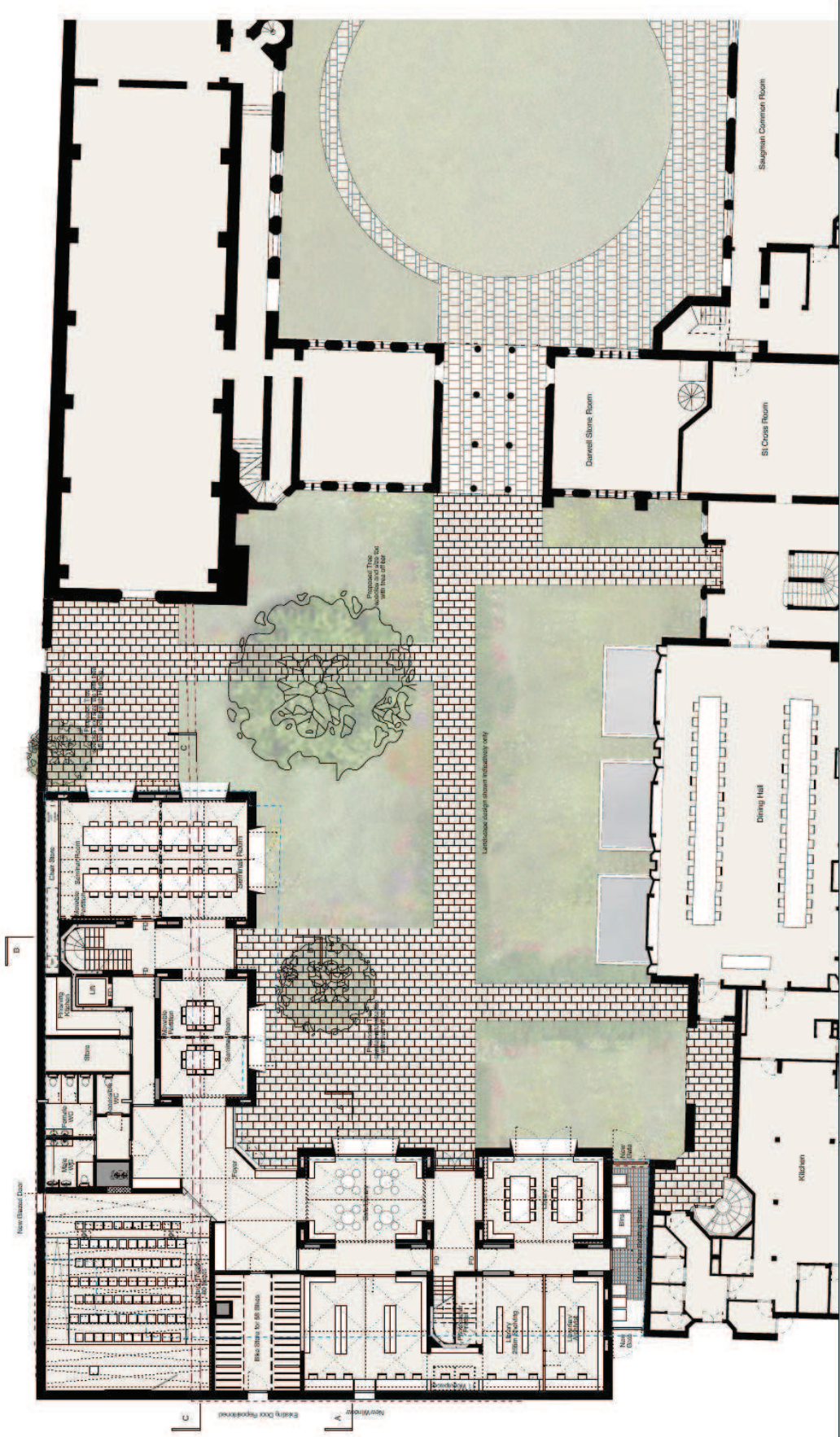
East Elevation

Key	Revision	Date	Description	No. P.E.s.	Notes
			Colour denotes Cliphart stone cladding		
			Colour denotes arid		
			Colour denotes reconstructed stone (gr)		
<p> Client: B. Coast College Client: B. Coast College Scale: 1:200 (A3), 1:100 (A1) Drawn: Niall McLaughlin and East Elevation Reference: 1008-P-107 Revision: </p>				<p> Project: 39-51 Highgate Road London N19 1RS UK T: +44 (0) 20 7485 9170 F: +44 (0) 20 7485 9171 E: info@niallmcLaughlin.com W: www.niallmcLaughlin.com </p>	
				PLANNING	
				STATUS:	

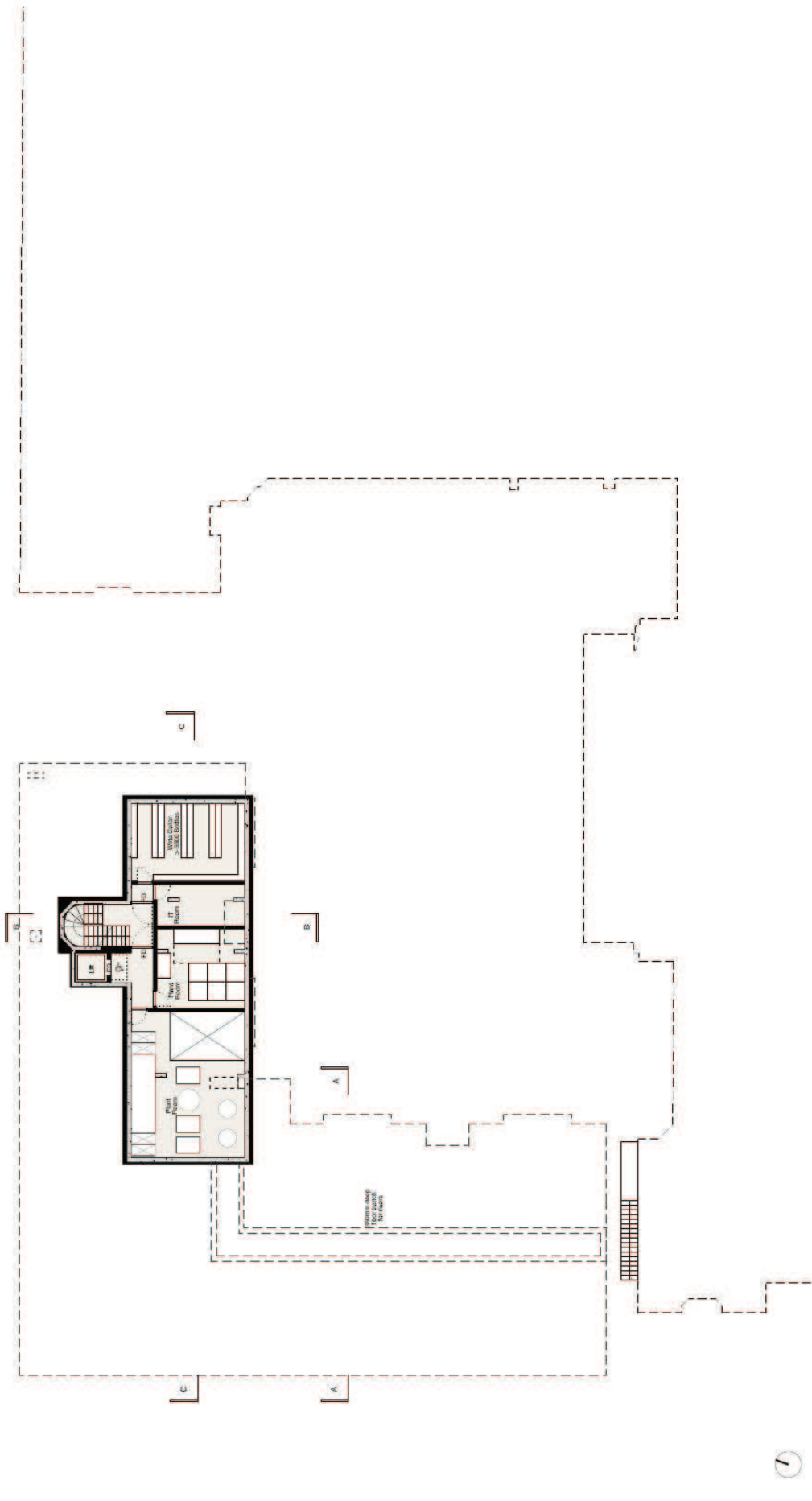




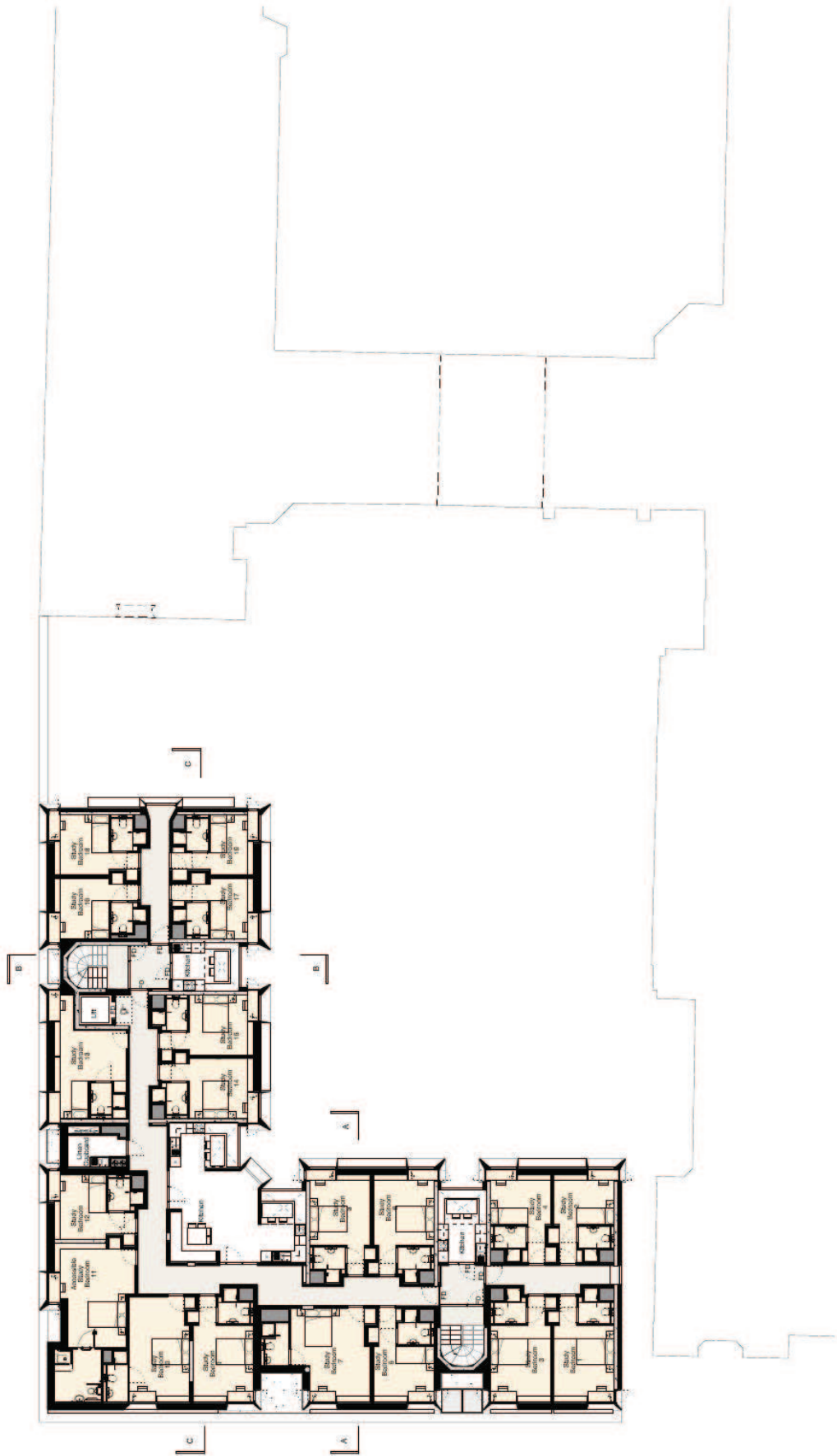




Key Service Floor Structure Dashed line - concrete Dotted line - previous application FD - Fire Door Air Louvre Footprint of previous application	Revision 1 13.07.13	Description issued for planning	NOTES
	DATE 13.07.13	DATE FIRST ISSUED 13.07.13	
CLIENT St. Cross College		ARCHITECT Niall McLaughlin Architects	
PROJECT St. Cross College		ADDRESS 29 - 31 Highgate Road Highgate London N5 2AF	
DATE FIRST ISSUED 13.07.13		PHONE +44 (0) 20 7482 3174	
DRAWN Niall McLaughlin		EMAIL n.mclaughlin@nlaa.com	
REVISION 13.07.13		WEBSITE www.niallmclaughlin.com	
STATE PLANNING			



Niall McLaughlin Architects	
JOB: B. Coast College CLIENT: B. Coast College SCALE: 1:200 (B.A.), 1:100 (R.A.) DATE PREPARED: 14/07/13 DATE REVISED: 14/07/13 REFERENCE: 1008-R-000 REVISION:	39-51 Highgate Road London NW9 1RS UK T: +44 (0) 20 7488 9170 F: +44 (0) 20 7488 9171 M: +44 (0) 793 108 8338 W: www.niallmcLaughlin.com
STATUS: PLANNING	Notes:
Revision: -	Description: Request for Planning
Date: 14/07/13	
Key: <ul style="list-style-type: none"> FD Fire Door Structure 	



Key	Revision	Date	Description	Notes
<ul style="list-style-type: none"> ▒ Service Point ▒ Staircase ▒ Fire Door 		13.02.13	Issued for Planning	
▒ Section Door				

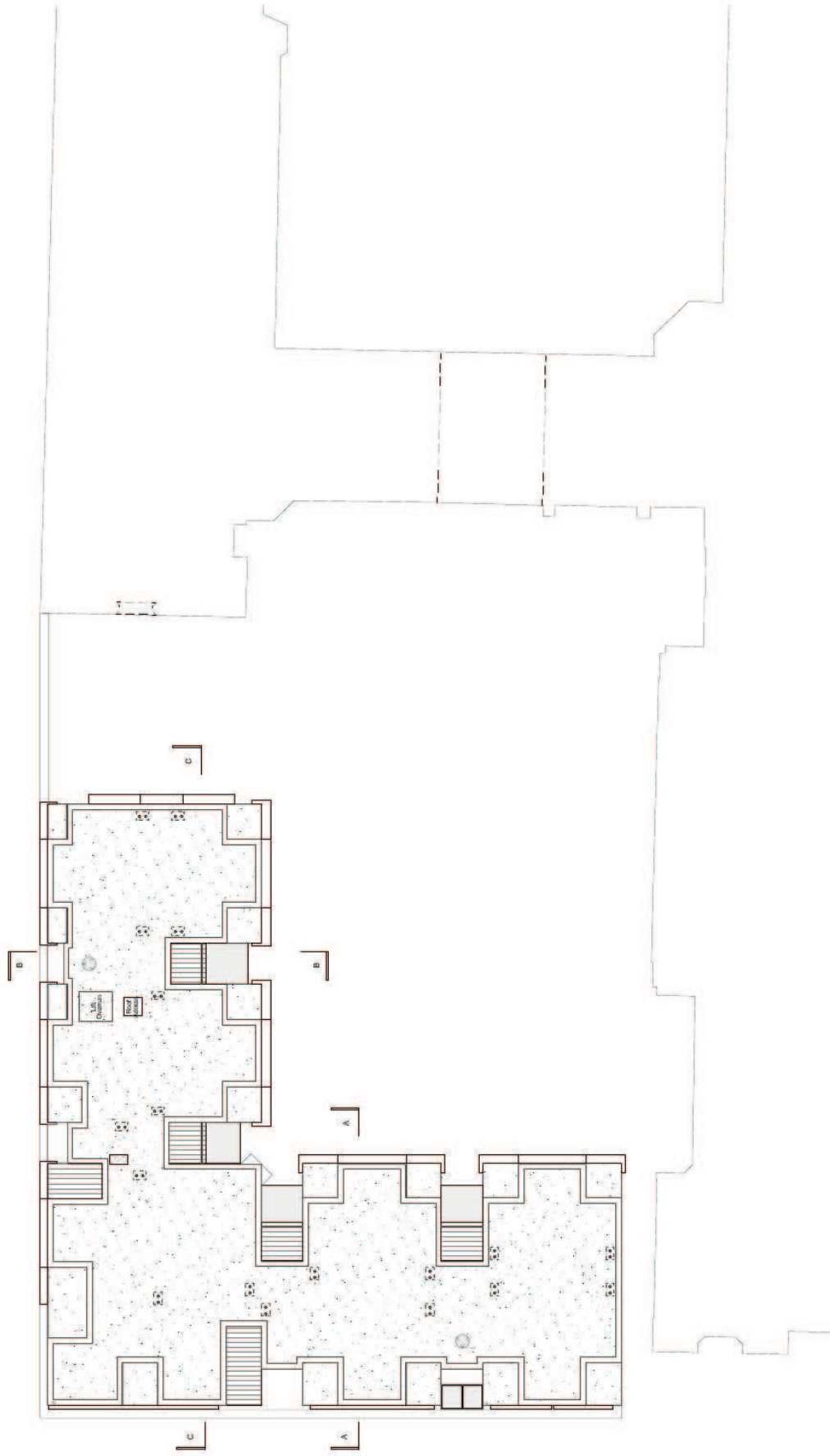
Niall McLaughlin Architects		28-31 HEATHROW ROAD LONDON NW10 7NS UK T: +44 (0) 20 7485 9170 F: +44 (0) 20 7485 9171 E: info@niallmcLaughlin.com W: www.niallmcLaughlin.com	
REF: BL Oscar College CLIENT: BL Oscar College SCALE: 1:200 (R.A.), 1:100 (R.V.) DATE FIRST ISSUED: 13.02.13 DRAWING: First Floor Plan REVISION:	PROJECT: Oscar College DRAWING: First Floor Plan	PLANNING	
REVISIONS:	STATUS:		



<p>Key</p> <ul style="list-style-type: none"> Service Hatch Staircase Fire Door 	<p>Revision: 13.02.13</p>	<p>Date: 13.02.13</p>	<p>Description: Issued for Planning</p>	<p>Notes:</p>	<p>Revision:</p>
<p>Client: RL Oscar College</p>	<p>Scale: 1:200 (A3), 1:100 (A4)</p>	<p>Date First Issued: 13.02.13</p>	<p>Project Name: Oscar College</p>	<p>Project Address: 20-21 Highgate Road, London N10 2RS, UK</p>	<p>Project Reference: 13/02/13</p>
<p>Architect: Niall McLaughlin Architects</p>	<p>Project Reference: 13/02/13</p>	<p>Date First Issued: 13.02.13</p>	<p>Project Name: Oscar College</p>	<p>Project Address: 20-21 Highgate Road, London N10 2RS, UK</p>	<p>Project Reference: 13/02/13</p>
<p>Project Reference: 13/02/13</p>	<p>Date First Issued: 13.02.13</p>	<p>Project Name: Oscar College</p>	<p>Project Address: 20-21 Highgate Road, London N10 2RS, UK</p>	<p>Project Reference: 13/02/13</p>	<p>Project Reference: 13/02/13</p>
<p>Project Reference: 13/02/13</p>	<p>Date First Issued: 13.02.13</p>	<p>Project Name: Oscar College</p>	<p>Project Address: 20-21 Highgate Road, London N10 2RS, UK</p>	<p>Project Reference: 13/02/13</p>	<p>Project Reference: 13/02/13</p>



Key		Revision	Date	Description	Notes	Niall McLaughlin Architects	
Service Reception	Glass Floorlight		13.07.13	Issued for Planning			20 St Michaels Place London N16 5RS UK T: +44 (0) 20 7485 9170 F: +44 (0) 20 7485 9171 M: 07700 632680 E: nia@niallmcLaughlin.com W: www.niallmcLaughlin.com
Staircase	Timber Cladding						
Fire Door	Section Hoop						
							PLANNING STATUS



Key		Revision	Date	Description	Notes	Niall McLaughlin Architects	
[Stippled Box]	Stainless Steel		15.07.13	Issued for Planning		28-37 Highgate Road London N10 2RS UK T: +44 (0) 20 7485 9170 F: +44 (0) 20 7485 9171 E: info@niallmcLaughlin.com www.niallmcLaughlin.com	28-37 Highgate Road London N10 2RS UK T: +44 (0) 20 7485 9170 F: +44 (0) 20 7485 9171 E: info@niallmcLaughlin.com www.niallmcLaughlin.com
[Hatched Box]	Timber Cladding					28-37 Highgate Road London N10 2RS UK T: +44 (0) 20 7485 9170 F: +44 (0) 20 7485 9171 E: info@niallmcLaughlin.com www.niallmcLaughlin.com	28-37 Highgate Road London N10 2RS UK T: +44 (0) 20 7485 9170 F: +44 (0) 20 7485 9171 E: info@niallmcLaughlin.com www.niallmcLaughlin.com
[Solid Grey Box]	Glass / Rooflight					28-37 Highgate Road London N10 2RS UK T: +44 (0) 20 7485 9170 F: +44 (0) 20 7485 9171 E: info@niallmcLaughlin.com www.niallmcLaughlin.com	28-37 Highgate Road London N10 2RS UK T: +44 (0) 20 7485 9170 F: +44 (0) 20 7485 9171 E: info@niallmcLaughlin.com www.niallmcLaughlin.com
						PLANNING STATUS:	



Section A-A



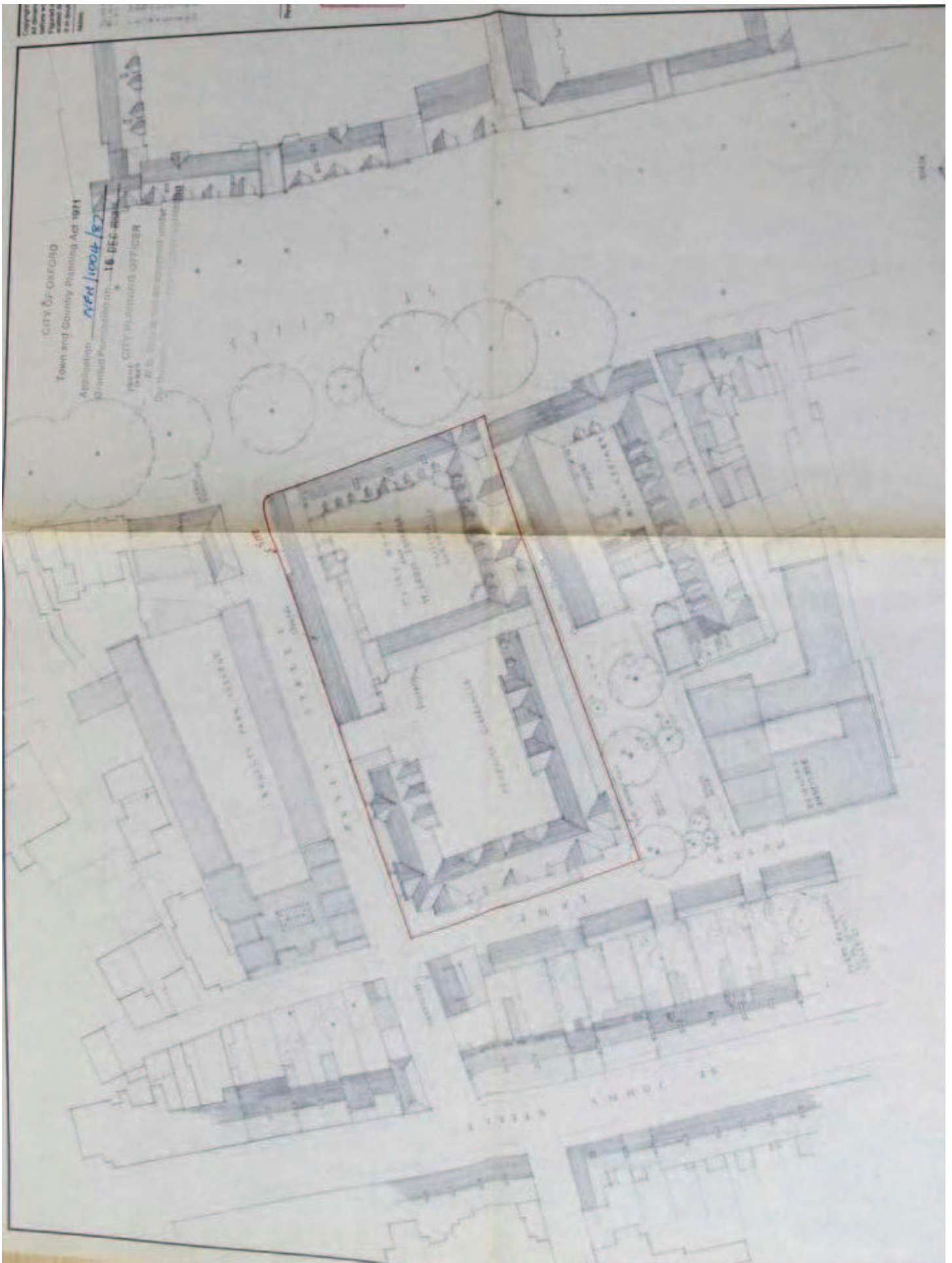
Section B-B

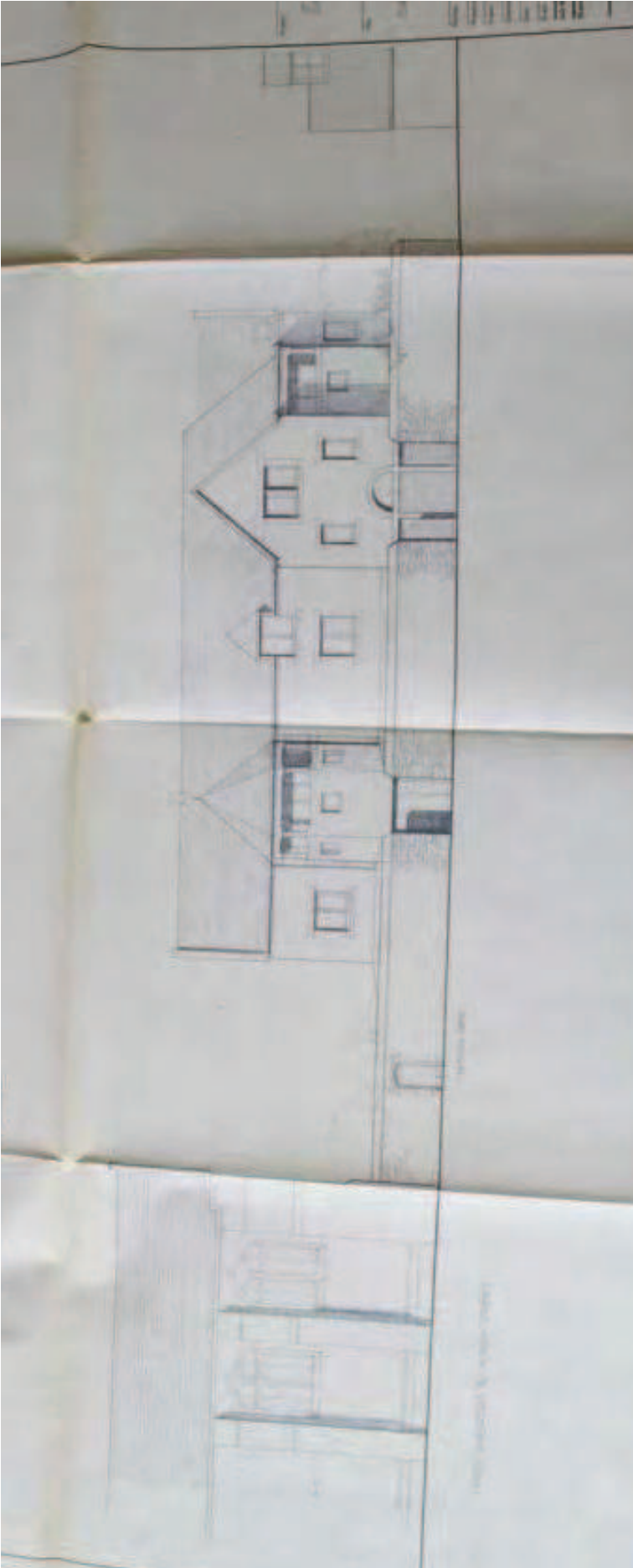
Revision	Date	Description	Notes
1	13.07.13	Issued for Planning	

Key	Description
	Colour external Clapham stone cladding
	Colour external render
	Colour external reconstructed stone (gr)

Niall McLaughlin Architects	
AREA: 84,000 sq ft CLIENT: St. Columba's College DATE FIRST ISSUED: 13.07.13 REVISED: 13.07.13 NO. OF REVISED: 1	PROJECT: St. Columba's College, 1100 B/A ADDRESS: 1100 B/A, 1100 B/A POSTCODE: BT9 5LJ CONTACT: Niall McLaughlin PHONE: 028 27 248177 FAX: 028 27 248177 EMAIL: n.mclaughlin@naa.com WEBSITE: www.naamclaughlin.com

PLANNING







This page is intentionally left blank